



## ***HOLIDAY SKIPPER CRITICALLY INJURED***

Andy Liljestrand, our full-time *Holiday* and part-time *Elsie M II* Skipper was critically injured on Monday, April 21<sup>st</sup> at about 11:15 am when he fell off the rear deck of the *Expeditions 3* as she sits on the hard stand for painting. Andy evidentially landed head first on the concrete causing sever trauma. He was taken to Everett Medical center where he remains in stable, but grave condition.

Please respect the family's privacy and direct any and all queries to the Island Office. Cards may be sent to the office as well, we will ensure timely delivery to his wife, Linda. We will forward periodic updates on Andy's condition via our E-Mail notification system. The family would request that you remember Andy in your prayers.

While we will endeavor to maintain all the schedules described below, Andy's absence may delay any number of vessel related plans.



## ***FROM THE BOARD PRESIDENT:***

Last year we revised and passed changes to our Articles of Incorporation that changed the description of our organization from a simple maintenance organization to a Home Owners Association to better reflect what we really are. That change was accepted by community voters with a record 87% margin. This was the first step in a long overdue renovation of our basic regulating documents. The next step is the rework of our By Laws. The Governance Committee has already finished its work and early this summer we will be presenting these recommended changes to the community in the form of a ballot.

The first change is that throughout the document the name Hat Island Community, Inc needs to be changed to Hat Island Community Association to mirror our new Articles of Incorporation.

Other significant change recommendations:

- Tie the By-Laws to the Revised Code of Washington, RCW 64.38
- Limit number of votes one person or entity can have to match language in the new Articles of Incorporation.
- Clarify definition of "family" and "guests".
- Provide for electronic attendance at meetings.
- Clarify Board member term limits.

*(Continued on page 2)*

(Continued from page 1)

- Lower the number of signatures necessary to call special meetings.
- Standardize quorum requirements.
- Add a CPI adjustment to annual assessments.
- Give the association the capability to begin foreclosure for non-payment of assessments, bills and fines at the one year point if owners are unwilling to cooperate in debt reduction in stead of waiting two years.

Most of these changes are long overdue and will remove inconsistencies and in some cases even argumentative passages of our current by-laws. The rest are designed to help us move more smoothly into the future, ensuring a constantly adequate level of funding, and providing additional voice to owners when they disagree with actions of the board.

Watch your View Point for more information on these important issues.

Ginger Harmon  
President  
Hat Island Trustees



New Ferry visited the island on April 10<sup>th</sup> to plan docking and gangway configurations



New Ferry, tied up in her future home, we'll be tying up stern-in, with a new boarding ramp system

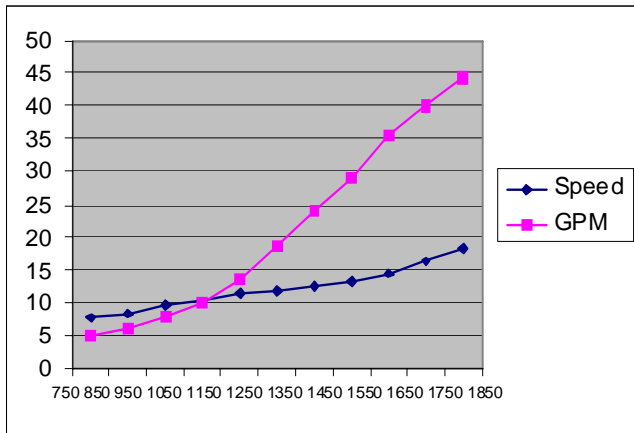
## FROM THE ISLAND MANAGER NEW FERRY UPDATE

It appears that even if there was something significant that we would need to repair, that we were still getting a bargain for our money. Well everything works! We had a successful launch in Seattle, drove her up to Everett at 18 knots and she's

made two round trips to the island to offload extra propellers and large spare parts and to test her in various docking and gangway configurations.

So far it appears that we will have her purchased, shipped, painted, boarding ramps designed and built, and in service for under the \$250,000 budget. All this for a vessel easily worth \$600,000!

We plan to put her into service following her re-christening on the Saturday of Memorial Day weekend, May 24<sup>th</sup>. But we still aren't done naming her. (See below)



(Continued on page 3)

(Continued from page 2)

If you'll think back to when we first found the new ferry and asked for your approval we clearly stated that while she is big and clean and fast that it would not be all 'Peaches and Cream". She is more expensive to insure. Our insurance will be about \$3,500 more each year. She is more expensive to berth. Since she's 11 feet, or 25% longer than Holiday she will cost us 25% more to berth in Everett. Now the big one – fuel. On the drive up from Seattle we took some fuel statistics. See the graph at left. The new ferry idles at 650 RPM and when you put her in gear she does 8 knots @ 750 RPM and burns 5 gallons per hour, per engine. Holiday does 8 knots at full tilt and burns 4 gallons per hour, per engine. So at the same speed as Holiday she burns just a little more fuel. But as you can see by the graph that beyond about 1,150 RPM and 10 knots, fuel consumption begins to rocket upwards. At 1,750 RPM the boat runs at 19 knots but burns 88 gallons per hour, so don't expect that we'll be running her any faster than 8-10 knots, that is unless you want ticket prices to climb like the fuel consumption graph. So as long as we run her at 8-10 knots, she'll be faster and quieter than *Holiday*, she's more comfortable than *Holiday* and carries 14 more passengers and a whole lot more baggage than *Holiday*, so be happy.

She was hauled out of the water on Thursday, April 17<sup>th</sup> to begin her USCG inspections and for painting and new graphics. She's in the yard at the 12<sup>th</sup> Street Yacht Basin on Marine View Drive in Everett.

### ***NEW FERRY NAMES***

We started with 60 name suggestions. During February you voted them down to five choices and this past month you voted to zero in on one name, but that didn't happen. No name received anywhere near a clear majority. So now we're down to two, a choice between Hat Express and Holiday II.

SO, one last run off between

*Holiday II* or  
*Hat Express*

Please cast your vote for your choice by Friday, April 9<sup>th</sup>. You can E-Mail us at [hioffice@hatisland.com](mailto:hioffice@hatisland.com). Call us at 360-444-6611, FAX it to 360-444-6614 or mail it to HIC, 3616 Colby Ave, PMB 335, Everett, WA 98201. That brings us to her Re-christening on Memorial Day, see "Memorial Day Fast Approaching" below.



New ferry going in the water in Seattle

### ***ELSIE M II***

The overhaul of the *Elsie M II*'s engines and the replacement of her cargo deck took on a life of its own and turned into a marathon rebuilding of almost the entire boat. Every system and component that we looked at turned out to need major work. Unfortunately once you open up the component and see it needs work you can't very well close it back up and pretend you didn't know. The work has to be done and you don't have the time to go back to the community and ask for permission. The *Elsie* is one of our life lines and we had to proceed, so we're going to blow our \$100,000 budget.



View of Elsie M II from Bow, looking aft showing new deck being welded in place.

(Continued on page 4)

(Continued from page 3)

The engines had 2 cracked cylinder heads. The transmissions both needed overhauling. We had to replace both drive shafts; both steering nozzles needed major overhaul; both steering shaft stuffing boxes required major work. Both propellers needed truing. We removed about a ton of old, unused plumbing and wiring, replaced and relocated the lift gate winch and relocated hydraulic pumps to more accessible spots on the engines.

When all is said and done, she'll be in great shape and will give us years of safe and reliable service. As of this writing her rebuilt engines and transmissions had been delivered and work was proceeding on the reinstallation which the ship yard estimates at 10 days. She should be in service in time for the May Community Run.

## JOIN IN.....

There are two important topics being discussed by members on the community web site's discussion page.

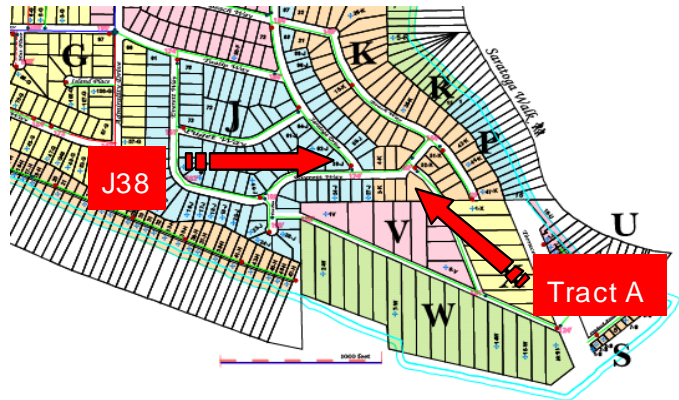
One concerns funding the island into the future and asks the question of assessments vs. fee for use. The second is on how to pay for a year round Friday evening ferry run. We'd like your opinions on both. Please visit the web site [www.hatisland.org](http://www.hatisland.org) and follow the links to the Opinion Poll page by clicking on the Discussion Link.



New Cargo Deck installed with hatches so that we can access the under deck voids for inspection and cleaning, note new diagonal traction strips which will not pool water

## PROPERTIES FOR SALE

The Island has two properties available for purchase. Lot J38 and Tract A in Div K are to be sold and the proceeds to pay for the overhaul of the *Elsie M II*. Both are corner lots with partial or potential views. Both are priced to sell.



## MEMORIAL DAY FAST APPROACHING

First off, the weather will be fantastic (if we all pray). We have a great Saturday planned. The *Holiday* will still be in service Friday evening and Saturday morning, (See Special Schedule below, red denotes changes from normal)

Day	Dpt Everett	Arr Hat	Dpt Hat	Arr Everett
Fri	6:30pm	7:15pm	7:30pm	8:15pm
Sat	8:00am	8:45am	9:00am	9:45am
Sat	10:00am	10:45am	4:00pm	4:45pm
Sat	5:00pm	5:45pm	6:00pm	6:45pm
Sun	9:00am	9:45am	10:00am	10:45am
Sun	11:00am	11:45am	4:00pm	4:45pm
Sun	5:00pm	5:45pm	6:00pm	6:45pm
Mon	9:00am	9:45am	10:00am	10:45am
Mon	11:00am	11:45am	4:00pm	4:45pm
Mon	5:00pm	5:45pm	6:00pm	6:45pm

## Memorial Day Weekend Ferry Schedule

Following the 10:45am ferry arrival on the Island on Saturday we'll all gather in the marina at 11:00 AM for our second annual Memorial Day Salute to our fallen veterans, sponsored by the Hat Island Yacht and Golf Club. (If you are or know of a veteran on the island and have not contacted Judy Lee, please do so ASAP at [jhatj@clearwire.net](mailto:jhatj@clearwire.net)).

(Continued on page 5)

(Continued from page 4)

Last year's ceremony was attended by about 150 people and there was not a dry eye in the house.

Immediately following we'll turn our attention to the new ferry for a "de-naming" ceremony where we will thank Poseidon for watching over *Expeditions 3* during her service and ask that he remove that name from his ledger of vessels. (rest assured that we will have already removed all vestiges of the previous name from the boat) We will thank Boreas, Eurus, Notus, and Zephyrus, the gods of the north, east, south and west winds for protecting her during her voyages. We will then ask Poseidon to add the new name to his ledger and petition the gods of the four winds to watch over her in the future and then we'll break a bottle on the bow. Following this the new ferry will be open for tours and will then go into service for the afternoon return runs.

After the ceremonies our newly refurbished RO plant and newly renovated water office will be open for tours.

**VEHICLE REGISTRATIONS FORMS** went out with 1<sup>st</sup> quarter statements and are due back by May 1<sup>st</sup>. A reminder that the requirement is that all vehicles that use island roads must now be registered with the office and display a registration sticker. Details are on the forms. If you've misplaced yours you can download another from the documents link on the web site.

## **GOLF RATES**

Golf rates have changed and there is now a guest rate as well. Please have the correct change or your check book when you play. Better yet ticket books are available for sale at the Island Office.

	<b>Owner</b>	<b>Youth*</b>	<b>Adult Guest</b>
9 Holes	\$12	\$5	\$15
18 Holes	\$18	\$10	\$20

When using pre-purchased tickets guests play for the same cost as owners.

\* Youth to age 18

## **POTENTIAL CHANGE TO FERRY SCHEDULE**

One of the things that the new ferry will do for us is allow us to run after dark as we are less concerned about the damage that a log strike could cause to the aluminum hull vice the *Holiday's* 46 year old wooden hull. Additionally there has always been a lot of discussion about a year round Friday evening run.

The question is how to add a Friday evening run without adding additional cost to the total ferry operation. The fulltime ladies on the Wednesday run came up with a possible solution, trade a Friday evening round trip for one of the Sunday morning round trips. In short you would gain the ability to come over to the island on Friday evening and go home on Sunday evening all year long, but in the winter months you could not get to the island on Sunday morning.

We're interested in your thoughts, go to the web site's discussion pages and let us hear from you.

## **ONE AED DOWN, ONE TO GO**

With donations from Susan Simmons, Jim Zelmer and Cindy Ketchum we had enough to purchase an AED for the ferry. That instrument is now installed. We have also received donations from Given Chase, Tiny Koopman and Leslie Reuter towards our second AED for the Island Office/Marina. We still need about \$800 more to get this one. If you'd like to be able to put your hand on something that you helped the Island achieve, this would be a good task.

## **SUMMER AT A GLANCE**

Even though the weather may not feel it, the summer season is just around the corner. Here's a glimpse at some of our summer events:

May 3<sup>rd</sup>  
9:30 AM Golf Course Clean Up Work Party – Bring rakes

(Continued on page 6)

(Continued from page 5)

5:30 PM Cinco de Mayo Party at HIY&GC – Members and Guests

May 17<sup>th</sup> Open Boat Cruise - Marina

Memorial Day Weekend May 23-26 **Special Saturday Ferry Schedule + Monday Runs**

**Saturday**

- 10:00 AM Memorial Day Flag Ceremony – Marina
- 10:45 AM Christening Ceremony for New Ferry – Marina
- 12:00 Lunch at Golf Course – HIY&GC Members and Guests
- 1:00 PM Shot Gun Start of Fun Golf – HIY&GC Members and Guests
- 6:00 PM Memorial Day Dinner at HIY&GC – Members and Guests

**Sunday**

7:00 AM Serious Golf– HIY&GC Members and Guests

**Monday** – Ferry runs per Sunday schedule

July 4<sup>th</sup> Weekend – **Special Ferry Schedule**

**Thursday**

6:30 PM Special Ferry Run Departs Everett

**Friday**

- 8:00 AM Special Ferry Run Departs Everett
- 12:00 Annual July 4<sup>th</sup> Parade, open to all, prizes, games, food

Labor Day Weekend - **Special Ferry Schedule**

**Friday**

- 4:00 PM Special Ferry Run Departs Everett
- 6:30 PM Special Ferry Run Departs Everett

**Saturday**

- 12:00 Lunch at Golf Course – Open to all - Fee
- 1:00 PM Shot Gun Start of Fun Golf – Open to all - Fee
- 6:00 PM **OKTOBERFEST** – Open to all – Fee
- 9:00 PM Special Ferry Run Departs Hat Island

**Sunday**

7:00 AM Serious Golf– Open to all – Fee

**Monday** – Ferry runs per Sunday schedule

## **MARK YOUR CALENDARS**

Oktoberfest 2007 was a huge success with the largest crowd at an Island wide event for nearly 20 years. So we're doing it again this year. Mark your calendars for Saturday, August 30<sup>th</sup>. Like last year there will be live German music, an authentic German meal prepared by the executive chef from Lufthansa, and of course Paulaner Oktoberfest Bier direct from München. This year we'll order twice as much bier.

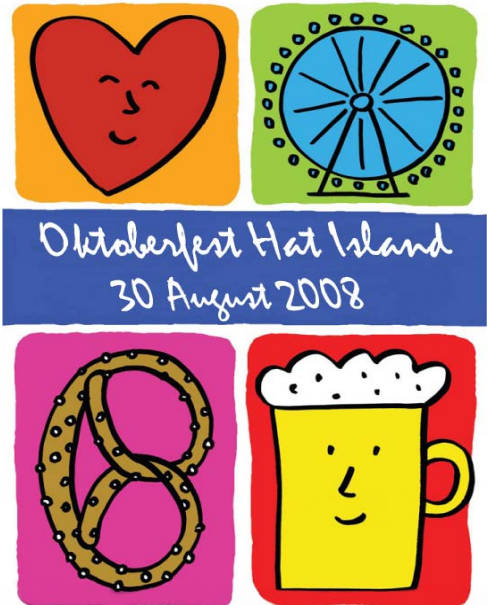
Not only is it just a great time, but it's also a great opportunity to meet your fellow owners. The event is co-hosted by Island management and the Yacht Club, it's for everyone.

## **MARINA PROJECT UP DATE**

Both new main floats are installed and both new gangways are in. Contracts have been let for the replacement of both A and B docks. We are expecting to take delivery of the new A dock on Wed of the week of April 21<sup>st</sup> and plan to have it fully installed by that Friday. To do this we will have to remove the old A dock that Monday. If all goes well we will contain the work to the work week and have A dock installed and wired by Friday night.



Dollye motivates Loren with a stick during window replacement project on Starter Shack



(Continued on page 7)

(Continued from page 6)

We'll take all the able bodied volunteers we can get to help with this work.

That brings me to the removal of the displaced docks. We don't have space in the Marina to leave them floating in a corner and we simply can not afford to have the old docks in a pile in the field come school letting out. The mountain of old docks would be an "attractive nuisance" and kids will be climbing on it and one will break a leg or neck and their parents will sue us. So the displaced docks have to be gone by the first week in June when schools let out.

In short we don't have a lot of time to leave these old docks floating in the marina nor piled up in the field. If you want some portion of these docks for a swim or work float or a dock in front of your property, or to salvage some lumber for a deck or walk you have to act **now**. Contact the office, pick out what you want so that it can be segregated and then make arrangements to have it towed somewhere before the end of May. During the first week of June we will take a track hoe, crush what's left over and load it into dumpsters to be hauled away.



New south gangway shown at a -2.5' low tide, no more climbing Mt. Everest at low tide! Obviously we still need to dredge!

## ***YOUR GOLF COURSE***

Even if you've never touched a golf club in your life, you have to marvel at the recent improvements to our golf course. I'll give the credit for most of the winter debris clean-up, the condition of the greens and the general condition of the course to Scott Gresli, our new greens keeper who's been working tirelessly to get the course ready for the summer.

But most of the credit goes to volunteers. Walk out on the course and go to the area around #2 green and #3 tee box. It rivals any of the most expensive courses in the state in design and execution, truly a work of art. The primary credit goes to Larry Bender and George Harmon. Then walk down to the area between #5 and #9 tees and #8 green. Loren and Dollye Pawloski, Jim and Karen Murphy and Judy Lee and Jim Moore have done a bang up job in turning the area into a well functioning and great looking park like area. Look at the Men's #2 Tee box. Jon Lalone has cleared out years of overgrowth, opened the tee box up and it's starting to be very nice.



Rusty and Less installing new windows and doors on the Starter Shack, looks like more fun than work!

Everywhere on the course volunteers are picking up rocks that damage our mowers, filling in low spots that cause uneven mowing and rattle your golf cart, and enhancing planting beds, cleaning out the rough, and doing all the little things that the staff just can't get around to with our limited budget.

Volunteers have begun a complete renovation of the starter's shack at #1. The building now sports new windows and doors and a new roof. Loren and Dollye, Judy Lee, Rusty Dicey, and Les and Shirley Allen provided the labor for the window install and Rusty put on the new roof. It will soon have new steps, a fresh coat of paint.

These and all our great volunteers make it a pleasure to

(Continued on page 8)

(Continued from page 7)

work here, make it fun to organize and plan, and they keep the staff invigorated. Our thanks to these and all the volunteers that make this Island what it is.

And then we have this. On Sunday, April 6<sup>th</sup> Dollye took the picture below of damage done to the #6 green by someone driving what we believe to be a “gator” style vehicle. The wheel base was too big to be a standard quad so it must be a side-by-side. The tire tread is also a bit unique.

I’m sure you can imagine our anger and disgust at this senseless act of vandalism. This damage will take months to be repaired. All winter’s hard work out the window because some uncaring person doesn’t value our island and all the work that volunteers and staff do to make and keep it the best we can.

Obviously we’d like to know who did this.

## ***WATER REPORT***

We have a state requirement to notify you every 90 days that we are still out of compliance with the new more stringent Arsenic standards recently implemented by the EPS. The maximum amount of Arsenic allowed in drinking water is 0.01mg/liter. Our 12 month average last year was 0.014mg/l. Arsenic has an affinity for iron and our well water has a lot of iron and manganese in it. As we replace the filtration media with a newer product we will be removing more iron from the water and the arsenic which bonds to the iron will be removed as well. This new filtration media is called GreenSand Plus<sup>®</sup> and is an updated version of what we have used in the past. It uses chlorine rather than sodium permanganate as a regeneration agent.

Our water system engineers, Gray and Osborne have submitted our plans to refit the system to use chlorine and GreenSand Plus to the state and we are now waiting their approval to move forward, once we receive that approval the work will go quickly.

As we reported last month when we do begin chlorinating the well water and the RO water decades of built up minerals and biological deposits will be oxidized and will be flushed out of the distribution system through normal use. You’ll recognize this immediately. Chlorination will loosen the mineral deposits and neutralize the organic material and it will all end up in the water. You’ll see it as cloudy and discolored water. It is harmless as the chlorine has sanitized it. This will go on for upwards of a couple of months. It will clear up fastest in the areas of our system where there is a lot of flow and will take much longer in the remote ends of the system. Initially getting the chlorine levels right will be a bit trial and error, so there may be periods of time when you smell chlorine in your water. This too will pass. If you are particularly sensitive to chlorine, or if the cloudiness of

## ***SAFETY CORNER***

***WE THOUGHT WE WOULD MENTION THIS AGAIN, IT SEEMS IMPORTANT TO US.***

**AIRLIFT INSURANCE.** Will your medical insurance cover a helicopter flight to Harborview in an emergency? The last Island resident to be airlifted off the Island received a bill for over \$7,000. Check your medical insurance and if emergency airlift is not covered then you may want to visit -

<http://airliftnw.org/aircare/aircare.htm>

and check out their \$79 per year membership which covers you and any guests in your house.

If you have ideas or concerns about safety or security on the Island contact

Dave Frye @

[fralph46@hatiland.com](mailto:fralph46@hatiland.com)



Someone drove an ATV across #6 Green

(Continued from page 8)

the water concerns you, you may want to bring over bottled water for cooking and drinking.

While the Reverse Osmosis Plant is back on line following a full winter of retrofits, upgrades and repairs, we have determined that it is time to replace the filtration membranes themselves. One of the things that we discovered during our overhauls this winter is that the membrane cleaning system water heater was never fully installed and has never worked. Therefore we have never really cleaned the membranes according to the manufacturers' directions, that is now solved.

On May 14<sup>th</sup> Siemens Water Technologies will be here to assist us in replacing the 12 membrane filters.

The winter overhaul of the "Water Kitchen", located in the building that houses the central filtration system for our fresh water wells and well #1, is now completed and you can feel comfortable that your water is tested and adjusted in a clean environment.

Our well production through March is below

	Well 1	Well 2	Well 3	Well 5	Well 6	TOTAL	WELLS	RO	TOTAL	ALL	WATER
	Gallons	Gallons	Gallons	Gallons	Gallons	Gallons	Average Chloride	RO Gallons	Average Chloride	Total Water	Average Chloride
Jan	42,735	36,421	29,579	17,175	2,848	149,298	76	0	0	149,298	76
Feb	31,561	25,542	25,907	21,613	15,347	119,970	65	0	0	119,970	65
Mar	39,663	35,042	36,373	20,045	26,085	147,217	62	0	0	147,217	62
Tot	103959	97005	31859	59382	64280	416,485	68	0	0	416,485	68
%	25%	23%	22%	14%	16%	100%		0%		100%	

## **FROM LOREN PAWLOSKI**

Board Representative to the Golf Committee  
May 2008

There have been significant improvements made to the tee boxes and bathroom areas at #5 & #9 thru the winter months. The area between these two tee boxes and the bathroom have had dramatic changes, and is nearing completion. There has been a great deal of rockeries, plants and bark areas added with new cart control paths. The adopt-a-hole sponsors on #5 are Jim Moore & Judy Lee. The adopt-a-hole sponsors for #9 are Jim & Karen Murphy, Loren & Dollye Pawloski. There has been added help from Larry Bender and island maintenance like Jim Conwell and Scot Gresli.

A big thanks to these folks for the significant amount of time and materials donated. Projects like this and the work done at number 3 really show what this course can look like in the near future. We feel you will enjoy the results

The caddy shack is sporting new windows and a front door. All done by great Yacht club volunteers like Les & Shirley Allen, Judy Lee, Rusty Dicey. Shirley is also working to prepare the annual golf course clean-up day on May 3<sup>rd</sup>. Yet another great volunteer effort from the Yacht & Golf club.

In addition, Les & Shirley along with Randy & Suzanne Wade continue to keep their adopt-a-hole #7 in great condition, picking rocks, landscaping and trees.

Mega thanks to all of the volunteers on the golf course. The efforts of the Yacht & Golf club volunteers and course member volunteers are setting the standards of community effort and giving back to your course.

## **Golf Course Improvements**

Since last September there have been great things happening for the golf course. We have trimmed up limbs, installed new sprinklers and added one additional in men's T-boxes. Re-graded and enlarged all women's Ts and put sprinklers in which were never in before. A new policy of sanding greens twice a year, fertilizing and moss control have made a dramatic difference in our winter time greens. There should be a huge impact on the summertime greens. All

(Continued on page 10)

*(Continued from page 9)*

nine holes have been adopted by volunteers in the Adopt-A-Hole project. They are in varying degrees of improvements. Holes #3, 5 and 9 have had dramatic improvements. Planned coming improvements will be defined cart paths between T-boxes and greens. (Similar to Green 8 and T-box 9) There will also be more tree de-limbing, carefully orchestrated so as not to impact difficulty of play. This allows barren areas to become grassier. During winter storms there will be less huge branches to be picked up and allow a more enjoyable play during winter time.

I would like to thank all the volunteers that came out to help on hole #3. George and Ginger Harmon, John and Cindy Bake, Jim Moore and Judy Lee, Ron Near, Joe Ebner, Art Cervantes, Gary Vogelsberger, Roger Martin and Jane Tufts. Plants were donated by Ginger Harmon and Matt Surowiecki and Gary Vogelsberger. Jim Moore did the drawings of the newly coming designs of the cart paths for the golf course.

All of these projects have been to a large extent due to the new golf committee. I would like to thank each one of them as well. Dale DeFoor, George Harmon, Loren Pawloski, Judy Lee, Alex Bromeo, Gary Duffner, Bob Brunjes. These people have spent a lot of their time working on improvements for the golf course.

Please give a big thank you to these individuals along with all the Adopt-A-Hole volunteers.

Larry Bender

Golf committee Chairman

## ***ONE BOARD SEAT OPEN***

This Fall George Aleci, current Vice President of the Board, will reach his two term limit and must step down. This leaves one vacancy on the board to be filled this fall.

SO here's your opportunity to step up and become part of the future of the Island. Watch here for more information, or contact the office for more details.

## **HICA Board Meeting Minutes - April 19, 2008**

**Call to Order;** George Alecci, Vice President, called the meeting to order at 10:40 am. George Alecci, Bill Townsend, Becki Snellenberg, Loren Pawloski were present. Scott Wilson was present electronically. Ginger Harmon and Susan Dahl were not in attendance. Chuck Motson, Island Manager, was also present.

**Minutes:** The minutes for the March meeting were accepted as printed in the View Point.

**Treasurer's Report:** Becki Snellenberg gave the Treasurer's report. The March monthly report and the quarterly report were presented and approved.

### **OMMITTEE REPORTS:**

#### **VESSELS:**

**Elsie M II Repairs** - George Alecci reported that work on the Elsie has revealed more extensive repair needs than anticipated. While it is clear that we will exceed the amount budgeted for repairs, it is yet unclear by how much. Chuck has been trying to get clarification on costs of the additional repairs but as work is still in progress is it difficult to get an accurate statement. It is anticipated that repairs will be complete and the Elsie will be back in service by May 1st. There are a number of backlogged runs that the Elsie will be making. We do not anticipate need for an additional community run however. If there is a huge demand, a second community run can be scheduled.

**New Vessel** - The new ferry is here and in the process of being painted. Chuck asked that the painters be left alone to complete this job over the next month. When they are disturbed for tours it delays the schedule. The boat will be in service soon and everyone will have a chance to see it.

*(Continued on page 11)*

*(Continued from page 10)*

**Name the Boat** - Two finalists for the new boat name were identified. They are Hat Express and Holiday II. They will be printed in the Viewpoint and everyone will have a final chance to vote. Votes must be in by May 9th. Scott Wilson again expressed his opposition to changing the boat name.

**MAINTENANCE AND EQUIPMENT:**

Scott Wilson reported that development of the spreadsheet to track maintenance/improvement projects more thoroughly, as well as projected equipment needs, is in process. This will organize all of the community owned assets and put them into a depreciation schedule. This will allow us to better manage current assets, track projects and anticipate future needs.

A new water truck has been purchased which will better accommodate our needs.

**MARINA:**

Bill Townsend reported that A dock fingers are going in this week. B dock is next. Everything should be complete in the next 3-4 weeks. Solar lights have been installed along C&D docks. The Marina Expansion project is still 18-24 months out before breaking ground due to the permitting process.

**WATER:**

Wayne has sent the required letter to the State stipulating the upgrades needed to get us into compliance with respect to arsenic levels in the water and requesting permission to do those upgrades. Once permission is received it will take 3-4 days to complete. We will be in compliance well within the time frame requested. Chuck emphasized once again that the arsenic levels in our water system have not changed. What changed was the state's level of allowable amounts. We are very close to that and just need minor upgrades to be in compliance.

**RO System:** The RO system is fully functional. We were able to run cleanings using hot steamy water for the first time as required. That allowed us to assess the membranes and it was determined that those will need to be replaced. That is scheduled for May 14th.

**GOLF:**

As usual, the golf committee has been going great guns. Loren Pawloski announced that a letter recapping recent accomplishments has been sent to all annual members. These accomplishments have also been highlighted in the Viewpoint over the past few months. One of the more recent improvements is the installation of a wireless flow constant pressure irrigation system for course watering.

The Adopt a Hole program has proven highly successful. Holes 2, 3, 5 & 9 are nearly done. Plans for Hole 4 are underway. There will be a new sign on Hole 4 ladies tee box with the sponsor name "Steeler" which will replace the main entry way sign. A new entry way sign will be put up.

The Caddy Shack received a make over recently thanks to Judy Lee, Rusty, Les and Shirley and Dollye who all helped to organize a work party of dedicated volunteers to complete the project. Our thanks for everyone for donating their time and efforts.

Several people noted that Scott Gresli, the new grounds keeper is doing a great job.

Golf clean up day sponsored by HIYGC is scheduled for May 3rd.

The course rating date has been postponed by the WSGA and rescheduled for sometime in May/June.

There was some disturbing vandalism on #6 green due to ATV tread damage. We would like to know who caused this.

**New Golf Rules:** Loren presented Golf Rules, which included a proposal for four additions for the board's

*(Continued on page 12)*

(Continued from page 11)

consideration. They are:

- Addition of a \$50 fine to lot owners for the failure of themselves, family member or guests to sign in and pay required golf fees.
- Clarification and leniency in dog rules. Dogs are allowed on the course under owner control in low use hours. Dogs contained to golf carts are permitted. Dogs may not disturb golfers in any manner. Owners are required to clean up after their dogs.
- Only golf carts and pull carts are permitted on the course. Any other vehicles will be authorized for clean up periods only.

After much discussion a motion was made and passed to approve these additions and clarification to the golf course rules.

### **SAFETY:**

Dave Fry gave the Safety report. Dave reemphasized the importance of all homes on the island having their addresses clearly marked and visible from the road for emergency response purposes. The Viewpoint will provide information on costs for basic road visible signs owners can purchase as well as upgraded options that are also possible. One suggestion was a sign that with the flip of a switch will flash on and off so emergency crews can clearly determine which homeowner has requested assistance. There was a suggestion that the purchase and resale of these signs to owners be done as a fundraiser for the fire department. A proposal will be presented at the next board meeting. Dave and John Blake have volunteered to conduct a search and identification of particularly hard to find properties on the island.

Dave is gathering information on making Hat Island a Firewise community. Anyone wanting further information on this can check their website at [www.firewise.org](http://www.firewise.org). Meeting the specifications for this certification as an island not only will make us a safer community, but also gives us access to State and Federal grants to support fire safety. We already have two people in our fire department certified to conduct voluntary home fire safety appraisals which are part of the certification requirements.

Dave suggested that homeowners check their insurance policies to see if Medivac services are included. An emergency airlift from the island could cost you as much as \$8,000 if you do not have coverage. Airlift Northwest does provide an airlift insurance policy for \$79 per year per family which sounds like quite a bargain.

The Edmonds Fire and Rescue boat has made 3 trips to the island to test the amount of time it takes them to respond to an emergency request. They are our back up if for some reason we can't get sufficient help from Everett in an emergency.

### **STRATEGIC PLANNING:**

Becki Snellenberg highlighted the fact that several of the committees have been very busy over the winter and addressing issues important to the island. However, a check of the webpage for strategic planning would give the impression that nothing has been going on since July. She encouraged chairs to remember to post updates, lists of topics committees are addressing, dates of upcoming meetings, etc. on the webpage so that the rest of the community can see the progress being made.

**OLD BUSINESS:** There was no old business to report

### **NEW BUSINESS:**

**Upcoming Board Position** - George Alecci reminded us that he will be leaving the board at the end his term and that position will need to be filled. Homeowners should start giving some thought to the idea of supporting the island as a member of the Board of Trustees. Elections will be in August. Questions about the position or the process should be directed to the Board or to HIC.

**Employee Insurance** - Bill Townsend suggested that we clarify in the Employee Handbook the HIC position with  
(Continued on page 13)

(Continued from page 12)

respect to employee health insurance. HIC does pay up to \$200 in Health insurance premiums for insurance purchased through HIC or through outside insurers. There is not a \$200 cash payment for employees who opt out of insurance coverage.

**Veterans Memorial** - Becki Snellenberg read a letter from Judy Lee, Chair of the HIYGC Veterans Committee, requesting support for the idea of establishing a permanent memorial in the marina to honor Hat Island veterans, past and present. Judy requested permission to start raising funds by selling carnations on May 24th and placing those funds into a designated account. If sufficient funds for a memorial are ultimately not raised, those donations could be diverted to the Island general fund.

A motion to support fundraising in the name of HIC for the purposes of creating a permanent veterans memorial on island property was made and approved.

#### **COMMUNITY INPUT:**

Zona Wyatt expressed concerns regarding encroachment on the 15 ft requirement for Div. H roads by HIC roadwork

It was announced that Dumpster Day is June 28th

There was praise expressed by homeowners for the improved maintenance seen around the island and for the purchase and delivery of the new ferry.

The next board meeting is May 17th.

The meeting was adjourned. The Board did not go into Executive Session.

Respectfully submitted,

Rebecca Snellenberg, Secretary



#### The Bookkeeper's Corner April - May 2008

Many thanks go to Barb Conwell for donating some new plants in the Marina. We are in the process of spreading topsoil into the area around all of the bushes, and I have planted three new grasses (miscanthus) that are supposed to turn red in the fall. Right now they could all use a little sunshine to get them going, but that has not happened yet. Oh but we did we have a gorgeous day last Sunday! I even saw some bare-footed people venturing out into the surf. Today woolen socks are on again. Weather forecasters are calling for snow at the weekend. If you don't like the weather..... wait a day. I pray for a sunny May.

The accountant hasn't finished the last of our taxes yet, and has not sent me his final entries, so I will have to publish the 2007 balance sheet next time.

There still seems to be a little confusion over the Marina Assessments vs. the Ferry Special Assessment. In 2006, the Community voted for 2 special assessments for the marina. The first, the Marina Improvement Special Assessment was approved for \$2105. This was to build a new bulkhead, and redo all of the docks. It was billed out to owners in January of 2007.

The Marina Expansion Special Assessment was also approved by ballot in 2006, by the owners for an additional \$2105. This was to be billed out in January of 2008. But it was not. Instead, we purchased the new Ferry, and sent out the bill

(Continued on page 14)

(Continued from page 13)

for \$210.00 that “replaced” the first payment of the Expansion assessment in 2008. But it did not really replace the payment. The Board merely voted to put off billing the owners for the Expansion Assessment \$2105 until 2009. It was a measure to reduce the amount due in 2008. It may be a good thing in other ways as well. Thanks to the many owners who have paid the Improvement assessment off in the first year, the Island has not had to borrow money for the marina improvements that you see today (new docks and gangways). And since the interest rate has fallen, we may be able to bill out the Expansion assessment with a lower interest rate.

I want to go back to the first, Improvement assessment. This assessment is (was) payable in one lump sum, without interest in the first year. If the assessment was not paid off in the first year, interest would be assessed in each of the next 9 years. The total amount due in each of the succeeding years is \$290.16.

These schedules are a little awkward to read, so let me go through it one time. The principle amount was \$2105.00. To the left you see Year 2007, Payment #1 is \$210.00 with no interest charged in the first year. Look to the right and see that the balance owed 12/31/07 is \$1895.00. I guess the “Balanced owed” column should read “Balance owed at year end”. If not paid off in the first year, interest of \$136.91 is posted to the account in January of 2008. This brings the total owing to +1895.00+136.91=\$2031.91. When the payment for 2008 is received, the balance owing at 12/31/08 will be \$1741.75. January of 2009, interest of \$125.04 will be added to the December 31st total, +1741.75+125.04=\$1866.79, an additional payment of \$290.16 will leave a 2009 year end total of \$1576.63. And so forth and so on until 2016. Do you have any questions? Email me at [bookkeeper@hatisland.com](mailto:bookkeeper@hatisland.com)

Talk to ya later!

**Loan Schedule:**

7.5% interest rate over 10 years

Year	Pymt #	Payment Amt	Interest	Principle	Balance owed	Principal amt	\$2,105.00
2007	1	\$ 210.00		\$ 210.00	\$1,895.00		
<b>2008</b>	<b>2</b>	<b>\$ 290.16</b>	\$ 136.91	\$ 153.25	\$1,741.75		
2009	3	\$ 290.16	\$ 125.04	\$ 165.12	\$1,576.63		
2010	4	\$ 290.16	\$ 112.20	\$ 177.96	\$1,398.67		
2011	5	\$ 290.16	\$ 98.39	\$ 191.77	\$1,206.90		
2012	6	\$ 290.16	\$ 83.49	\$ 206.67	\$1,000.23		
2013	7	\$ 290.16	\$ 67.47	\$ 222.69	\$777.54		
2014	8	\$ 290.16	\$ 50.19	\$ 239.97	\$537.57		
2015	9	\$ 290.16	\$ 31.55	\$ 258.61	\$278.96		
2016	10	\$ 290.16	\$ 11.46	\$ 278.96	\$0.00		
<b>Totals</b>		<b>\$ 2,821.44</b>	<b>\$ 716.70</b>	<b>\$ 2,105.00</b>			

## Golf Course Improvements

Since last September there have been great things happening for the golf course. We have trimmed up limbs, installed new sprinklers and added one additional in men’s T-boxes. Re-graded and enlarged all women’s Ts and put sprinklers in which were never in before. A new policy of sanding greens twice a year, fertilizing and moss control have made a dramatic difference in our winter time greens. There should be a huge impact on the summertime greens. All nine holes have been adopted by volunteers in the Adopt-A-Hole project. They are in varying degrees of improvements. Holes #3, 5 and 9 have had dramatic improvements. Planned coming improvements will be defined cart paths between T-boxes and greens. (Similar to Green 8 and T-box 9) There will also be more tree de-limbing, carefully orchestrated so as not to impact difficulty of play. This allows barren areas to become grassier. During winter storms there will be less huge branches to be picked up and allow a more enjoyable play during winter time.

I would like to thank all the volunteers that came out to help on hole #3. George and Ginger Harmon, John and Cindy Bake, Jim Moore and Judy Lee, Ron Near, Joe Ebner, Art Cervantes, Gary Vogelsberger, Roger Martin and Jane Tufts. Plants were donated by Ginger Harmon and Matt Surowiecki and Gary Vogelsberger. Jim Moore did the drawings of the newly coming designs of the cart paths for the golf course.

All of these projects have been to a large extent due to the new golf committee. I would like to thank each one of

(Continued on page 15)

(Continued from page 14)

Hat Island Balance Sheet  
As Of March 31, 2008

Assets

	YTD 2008	YTD 2007	Inc/Dec %
Cash & Cash Equivalents			
Total Cash on Hand - Checking	233,226.03	246,769.04	-6%
Other Cash & Cash Equivalents	677,200.08	789,516.58	-17%
Total Receivables	1,705,933.38 **	1,947,921.85	-14%
Deposits & Prepaids	12,610.05	18,832.23	-49%
Fixed Assets (less depreciation)	2,139,161.53	1,830,606.85	14%
Other Assets	429,599.31 ***	-	100%
<b>Total Assets</b>	<b>5,197,730.38</b>	<b>4,833,646.55</b>	<b>7%</b>

Liabilities

	YTD 2008	YTD 2007	Inc/Dec %
Accounts Payable	16,530.34	1,641.21	90%
Long Term Loans Payable	-	-	
Taxes Payable	43.41	3.16	93%
Deferred Income	2,330,444.44	2,211,822.99	5%
<b>Total Liabilities</b>	<b>2,347,018.19</b>	<b>2,213,467.36</b>	<b>6%</b>

Equity

Owner Equity	2,850,712.19	2,620,179.19	8%
<b>Total Liabilities and Equity</b>	<b>5,197,730.38</b>	<b>4,833,646.55</b>	<b>7%</b>

\*\*\*Note "other assets" includes "work in progress" of future assets.

them as well. Dale DeFoor, George Harmon, Loren Pawloski, Judy Lee, Alex Bromeo, Gary Duffner, Bob Brunjes. These people have spent a lot of their time working on improvements for the golf course.

Please give a big thank you to these individuals along with all the Adopt-A-Hole volunteers.  
Larry Bender, Golf committee Chairman

## Veterans Memorial

The HIYGC and the HIC will be co-sponsoring the memorial Flag ceremony and ferry christening on Sat. May 24. The ceremony is going to be held in the Marina and will begin shortly after the second morning ferry has arrived. Please note the two Holiday ferry runs will be at 8AM and 10AM on this day. The new ferry will be docked in the center of the marina facing the island. The speakers and singers will make their presentations from the bow of the boat. Mike Immel, the HIYGC Commodore, will be MC for the event and one of our island veterans, Haig Cartozian, will give a memorial address to the crowd. We are pleased again to have Dollye Pawloski and Gabby Borrromeo sing patriotic songs at the ceremony. Pete Morgan is our guest bugler and at approximately 11:55AM he will "call to order" with his bugle. At this time, everyone should assemble at the temporary flagpole facing the marina. There will be a PA system so anyone who

(Continued on page 16)

(Continued from page 15)

would like to stay on their boat should be able to hear the singers and speakers. Immediately after the flag ceremony, the HIC will start the re-naming and christening ceremony for our new ferry.

The Memorial Committee was formed to begin the process of planning for a permanent memorial for all Hat Island property owners, past and present. The intention is to honor all Hat island veterans, those living among us as well as those who have passed. It has been envisioned the memorial would be in the marina area. The names of our veterans would be engraved (and updated) in the memorial. It would be a place to sit and contemplate, a place to honor and remember those who have helped to give us the freedoms we all enjoy. Some of the members of the Memorial Committee will have a table set up in the marina on Sat. May 24. They will be selling carnation boutonnieres with flags on them to start raising funds for the memorial. Please give them your support by purchasing some flowers. Let's have a great turn out! See you there.

**Hat Island Community Income & Expenses March 31, 2008**

<b>INCOME</b>	Regular Assessments & all other sources	56,822.40
<b>EXPENSE</b>		53,063.28
<b>BALANCE</b>	Non-restricted funds	235,151.22
<b>INCOME</b>	Designated Assessments	107,767.90
<b>EXPENSE</b>	Designated Assessments	60,943.67
<b>BALANCE</b>	Restricted Funds	259,254.14
<b>INCOME</b>	10% reserve	1,872.03
<b>BALANCE</b>	10% reserve	154,861.14
<b>INCOME R.O.</b>		1,386.03
<b>EXPENSE R.O.</b>		173.10
<b>TOTAL R.O.</b>		86,974.07
<b>MARINA IMPROV</b>	income	11,487.88
	expense	123,140.00
<b>Balance</b>		163,207.88
<b>Div H Money Market</b>	balance	22,170.86

Note: More detailed reports are available at monthly board meetings and are also available in the Community office on the island.

ADVERTISING in the "VIEW POINT"  
 Business Card \$100.00 per year  
 Classified Ad (Want, sell, etc.)

**Windermere Real Estate/SBA, Inc**  
*Jon & Karen Rypdahl*  
 Associate Brokers  
 Full-time Hat Island Residents

*"Your best choice when selling or  
 buying real estate on Hat Island"*

Jon's cell: 206-949-9468  
 Karen's cell: 206-999-1619  
 Web site: [www.rypdahl.com](http://www.rypdahl.com)  
 Email: [rypdahl@msn.com](mailto:rypdahl@msn.com)



Advertisement

**STEELER INC**



**Matt Surowiecki**

Steeler is a GREEN Company that promotes the well-being of the environment by:

~Saving thousands of trees every month by producing 2 X 4' and many other sized steel studs

~ Planting approximately 3,500 trees and shrubs on Hat Island in the last couple years

The most preferred tree used for wood framing is a 50-75 year old Douglas Fir and for the last 32 years, Steeler Inc has saved 500,000 Douglas fir trees by manufacturing steel framing materials that replaced the wood for wood framing materials.

If you have any questions contact  
 Lindsay@ Steeler 206 725 2500 or  
 Matt Surowiecki @ Steeler 206 725 2500



**ANDES**

LAND SURVEYING, P.S.

[www.andeslandsurveying.com](http://www.andeslandsurveying.com)

**360-659-6639**

Jerry Andes, President

Serving Hat Island residents since 1991

**Bud Lofgren Team**

Expert in Hat Island Real Estate  
 Selling Hat Island since 1977

Ready to Help You Buy or Sell Your Property  
 Bud Lofgren - 425-643-7667

Rick Bennett - 425-280-7121

[www.budsellshatisland.com](http://www.budsellshatisland.com)

(visit our updated web site)

Keller Williams-Westsound




**RENEWAL GARDENS**

**Kristine Distel-Bennett**

Hat Island

Phone 360-444-6634 Cell 206-915-8459




*Co-Creating Your Ideal Surroundings With Nature*  
**Professional Landscape/Garden Design  
 Maintenance**



Charlotte Maulsby  
 Broker / Associate, GRI, CRS, ARB

Hall of Fame  
 206.999.4962  
 (f)360.563.0842

[charlotte@charlottesells.com](mailto:charlotte@charlottesells.com)  
[www.charlottesells.com](http://www.charlottesells.com)






**Bayside Outboards**

Parts & Service  
 Yamaha  
 Honda  
 North River  
 Arima  
 Duroboat

1230 W. Marine View Drive  
 Everett, WA 98201

425-259-6053 • Fax: 425-259-6052 • WATTS: 800-441-6053



**EVERETT® Bayside Marine**

Parts & Service  
 Boat Brokerage  
 Dry Stack Storage Moorage  
 Haul & Launch  
 Work Yard  
 Johnson & Evinrude  
 MerCruiser, Volvo, OMC

"On the Waterfront" • 1001 14th ST. • EVERETT, WA 98201 • (425) 252-3088



PRST STD  
U S POSTAGE  
PAID  
PERMIT NO. 281  
EVERETT WA

**SCHEDULE OF EVENTS**

- May**  
 3 Sat Elsie M load/run 7:30am  
 10 Sat Fire Drill 10:00am  
     Fire Bunnies lunch 12:30 pm  
     Fire Cmmissioners meet 1:30pm  
 17 Sat **Board /HIC monthly**  
     **Meet 10:30 am at the YC**  
 25 Sun Fire Bunnies pancake breakfast  
 27 Mon View Point articles due
- June**  
 7 Sat Elsie M load/run 7:30am  
 14 Sat Fire Drill 10:00am  
     Fire Bunnies lunch 12:30 pm  
     Fire Cmmissioners meet 1:30pm  
 21 Sat **Board /HIC monthly 10:30 am YC**  
 28 Sat Dumpster Day/Island cleanup  
 30 Mon View Point articles due

Official Publication of the Hat Island community  
 3616 Colby Ave PMB 335, Everett WA 98201

**Remember: All dogs must be in a carrier or muzzled while on the Holiday**

**Take your garbage home**

**Holiday Ferry Schedule**



**HAT ISLAND COMMUNITY**  
 Board of Trustees  
 3616 Colby Ave PMB 335  
 Everett WA 98201  
 (360) 444-6611 Fax (360)444-6614  
 Web site: www.hatisland.org  
 e-mail: hioffice@hatisland.com

Pres: Ginger Harmon Hm Hat(360)444-6815  
     Hm AZ: 480-288-8810  
     cell: (425)387-1301  
     e-mail: gharmon35@aol.com  
 Vice.Pres.George Alecci Hm(425)844-2929  
     e-mail: GAlecci@hotmail.com  
 Treas: Susan Dahl hm(360)805-2505  
     email: snjdahl@hotmail.com  
 Sec::: Becki Snellenberg hm (206)232-2699  
     cell: (206)498-7881  
     Hat hm(360)444-6719  
     email: beckisn@hotmail.com  
 Ttee: Loren Pawlowski Hm Hat (360)444-2014  
     cell: (425)864-1240 Hm (425)391-7720  
     e-mail: lpawloski@comcast.net  
 Ttee: Bill Towsend hm (425)985-8894  
     e-mail: starkerexchanges@msn.com  
 Ttee: Scott Wilson cell:(425)483-3530  
     e-mail: scott@wilsonrogers.com

**Island Manager**  
 Chuck Motson Office(360)444-6611  
     e-mail: hioffice@hatisland.com

**"View Point" Editor**  
 Eleanor Bruegeman Hm(206)523-6002  
     e-mail: elbeeb@aol.com

Harbormaster  
 Barb Conwell 360-444-6656

Day	Depart Everett	Arrive Hat	Depart Hat	Arrive Everett	Remarks
<b>March 26</b>	<b>2008</b>	<b>through</b>	<b>May 13</b>	<b>2008</b>	
Wed	8:00am	8:45am	9:00am	9:45am	
Wed	5:30pm	6:15pm	6:30pm	7:15pm	
Fri	6:30pm	7:15pm	7:30pm	8:15pm	
Sat/Sun	9:00am	9:45 am	6:00 pm	6:45 pm	
<b>May 14</b>	<b>2008</b>	<b>through</b>	<b>Sept 2</b>	<b>2008</b>	
Wed	8:00am	8:45am	9:00am	9:45am	
Wed	5:30pm	6:15pm	6:30pm	7:15pm	
Fri	6:30pm	7:15pm	7:30pm	8:15pm	
Sat	9:00am	9:45am	10:00am	10:45am	
Sat	11:00am	11:45am	4:00pm	4:45pm	
Sat	5:00pm	5:45pm	6:00pm	6:45pm	
Sun	9:00am	9:45am	10:00am	10:45am	
Sun	11:00am	11:45am	4:00pm	4:45pm	
Sun	5:00pm	5:45pm	6:00pm	6:45pm	