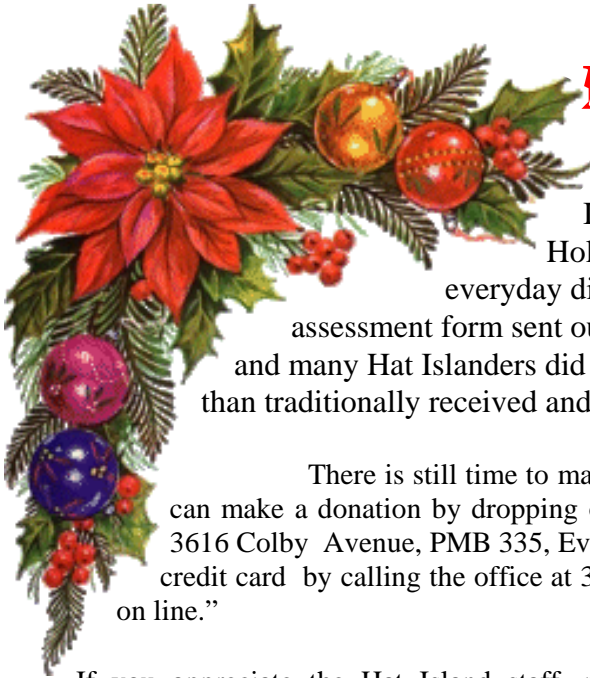


The logo for Viewpoint, featuring the word "Viewpoint" in a stylized, cursive font with two stars above the "i" and "o".The logo for Hat Island Community, featuring the words "Hat Island" in a large, cursive font above the word "COMMUNITY" in a smaller, bold, sans-serif font. Below the text are three wavy lines representing water.

December 2010 Volume 12 Issue 4
Official Publication of the Hat Island Community



FROM THE BOARD PRESIDENT:

Employee Holiday Bonuses

It is tradition at Hat Island that deserving employees receive a Holiday Bonus as a way for the Community to say thanks for their everyday diligence and providing assistance whenever possible. The annual assessment form sent out last January included a spot for a donation for Holiday Bonuses and many Hat Islanders did so. However, the amount donated to date is significantly lower than traditionally received and less than our employees deserve.

There is still time to make a contribution and show your gratitude to the Hat Island staff. You can make a donation by dropping off a check at the HI office, mailing a check (Hat Island Community, 3616 Colby Avenue, PMB 335, Everett, WA 98201) or you can make a donation over the phone with your credit card by calling the office at 360-444-6611, you can also go to the Hat Island website and click "pay on line."

If you appreciate the Hat Island staff, please consider making a donation, large or small, to provide our employees a reminder of your appreciation during this Holiday season.

Dock Safety (AKA "Oops, Splash")

Rumor has it that at least two HI Board members have taken unanticipated swims in the marina over the last few months. Since about 1/3 of the current Board has fallen off the docks, this may raise some questions about the Board. Nonetheless, it also should heighten concern about being safe and WEARING LIFE JACKETS while on the docks and getting on and off boats. With wetter weather here, the docks are becoming slippery. This is exacerbated by the thirty or so seals that have found the HI docks to be a great resident hotel. Unfortunately, as of the date of this Viewpoint all efforts to potty train the seals have failed.

\$\$ PAYMENT REMINDERS \$\$

A reminder that by Dec 31st your 2010 Regular and Marina Special Assessments must be paid. This also includes any outstanding water billings or other fee for service invoices.

Also please remember that the last day we will pick up mail will be Wednesday, December 29th. If your payments are not at the Colby Ave mailbox on that Wednesday they will not be picked up until January 5th, 2011 and late fees will apply.

Reminder postcards will be mailed on December 1st. If you get one you have a balance due for 2010. If you

(Continued on page 2)

(Continued from page 1)

Seriously, especially this time of year the docks are slippery. Please watch your step and take other appropriate safety measures.

Best wishes for the Holidays

This is a quite time of year on the Island with Thanksgiving behind us and continued forecasts of wind, rain (and possibly more snow) ahead. On behalf of the HI Board, I would like to wish you the best for the Holiday Season.

Alan Dashen
President of the Board
G-48

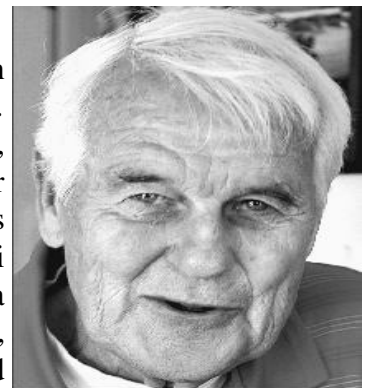
FROM THE ISLAND MANAGER:

PASSINGS:

Sadly we must announce the passing of **Geraldine (Gerry) Bresnan** who passed away unexpectedly on Nov. 4, 2010 in Mukilteo, WA. Gerry and her husband Joe built their U-1 home on Hat Island in 1956 and had been constant summer residents since then.

She was born in Bellingham, WA to William and Helen Greiner Kissner on Sept. 30th, 1926. The family moved to Queen Anne Hill in Seattle in 1935. She attended Queen Anne H.S. class of 1944 and later attended U of W. Gerry married Joseph Bresnan in 1948 to be married 52 years before his passing May of 2000. Gerry worked for GTE for several years retiring in 1989. She is survived by son Norm (*who also owns a home on the island*), Granddaughters Kerri, Katie (D.R.) and great grandson Cody all of WA, Daughter Jeannie (Curt) of AZ, Granddaughter Sherry (Steve), grandchildren Lauren and Riley of CA, brother Sherwood of CA, Edna of ID and Edie of WA, as well as several great grand nieces and nephews, many close friends and her constant companion, dog Molly B. Gerry was preceded in death by her Parents, Husband Joe, Brothers Norman and Merlin and Sister Jean. Per her request, a Family Service will be held. Her final resting place will be at Mt. Pleasant Cemetery in Seattle next to Joe. Arrangements made by Funeral Alternatives of Marysville, WA. In lieu of flowers, donations can be made to Polio Outreach of WA, POB 1876, Kingston, WA 98346. Published in The Seattle Times on November 14, 2010

Harold W. Hanson, 81, slipped away peacefully at his La Conner, Washington home on October 17, 2010. (*Harold was a long time owner of Lots C-6 and A-28. Harold put the pool in that was on the A-28 property*) Born in Salem, Oregon, Harold was a lifetime visionary and entrepreneur. Raised by his widowed mother from the age of four during the Depression, he gradually built his life starting his first business as a shoe-shine boy. From there, he acquired a gas station, two ski lodges and more, before finally settling in Monroe to build his business and raise a family. Along the way, he served during the Korean War in the U.S. Army, graduated Bradley University and constantly pursued his passion for flying and small planes. Later, to share his love of aviation, he developed the Skagit Aero Education Museum collection of light airplanes in Concrete, Washington and donated his collection of classic



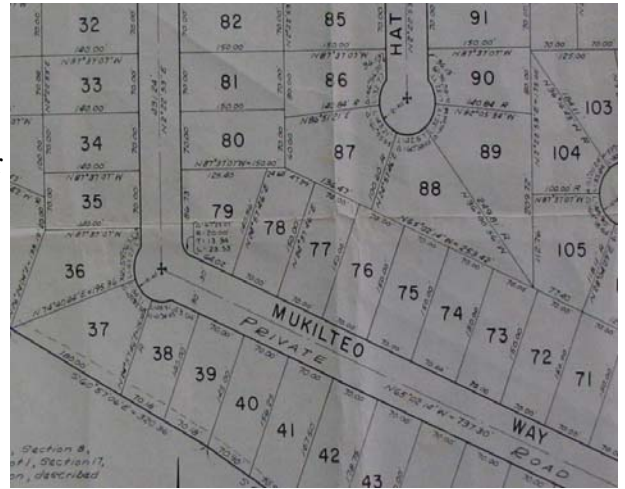
(Continued on page 3)

airplanes. The museum will be his legacy for years to come.

Harold is survived by his son, Mark Hanson, Mark's wife Debbie, their children, Kyleigh and Garrett; and several nieces and nephews. He was predeceased by his sweet wife of 56 years, Geraldine; and his son, Marlo. A memorial service will be held at First Baptist Church of Monroe, 17922 149th Street SE on Saturday, November 13, 2010 at 1:00 p.m. There will also be a celebration of Harold's life at the airfield in Concrete on Saturday, November 20, 2010 at 2:00 p.m. In lieu of flowers, donations may be made to Skagit Aero Education Museum, Hangar #4, 7879 Superior Avenue, Concrete, WA 98237. Published in Bellingham Herald from October 30 to November 12, 2010

G-77 TO BE AUCTIONED ON DEC 3RD THIS IS A REAL DEAL!

The property G-77 (Snohomish County Tax # 00466700007700) will be sold at sheriff's foreclosure sale for nonpayment of association assessments at 10 am on Dec 3rd. It is a potential view lot facing SSW (Mt. Rainer and Seattle). Currently due on the account is \$20,000+/- including all regular and special assessments, interest and attorney's fees, but does not include October and November's and legal fees. The property is also one year in arrears on county taxes of about \$411.00. We will publish sale time and the minimum opening bid when they become available. The island cannot offer any advice on this property. If you are interested in bidding on it you should seek professional legal advice. We will post the minimum bid on our web site and through our e-mail notification system about 5 days prior to the sale.



BANK FORECLOSURE OF F-24

The bluff property F-24 located at the intersection of Admiralty and Saratoga Drives (Snohomish County Tax # 00466600002400) will be sold by the mortgage holder at sheriff's foreclosure sale at 10 am on December 3rd. We don't have a lot of info on it other than the data available on the county assessor's site. It was built in 1999, is 3 bedroom, 1+ bath, and is 1,800⁺ square feet in the main floor, loft, and basement. Its 2010 assessed value is \$425,000 with 2010 taxes at \$4,227. We have no information on minimum bid or the amount remaining on the mortgage. More information can be obtained by contacting the trustee @ <http://www.northwesttrustee.com/>, the case number is

7763.26839. There is also currently \$3,509 due to the Island which is not included in the sheriff's sale amount. The water service to the property is suspended until the Island's debt is cleared.

(Continued from page 3)

D, C, AND B DOCKS POWER OUTAGE:

As we have reported before the main power station at the top of the north gangway ramp in our marina has past the end of its useful life and needs a complete rebuild. This will require having Snohomish County PUD to do a full disconnect of the power from the source transformer before work can begin. We have placed the order with Snohomish County PUD to do the disconnect, but have little control over when that will happen. It is quite likely that the power on these three docks will be out for upwards of a month. During this time there will be no shore power and no street lighting or dock lighting. If you come and go during limited visibility hours or need shore power you should consider moving your boat to an appropriately sized slip in the South (east) end of the marina. We'll send an e-mail out when we know the exact day of the disconnect.

ITS NEARLY 2011, PLEASE PLAN AHEAD: We keep three months on the whiteboard calendars on the wall and we ready to post February 2011! For the most part things will happen this coming year on the same weekends as they did this past year. That part is easy. What we would ask is that if you are planning an event on the Island for 2011 that you let the office know now so that we can lay things out and so that you don't find after months of planning that your event is scheduled for the same day as something else. The ferry, golf course and The Commons (picnic pavilion) all get scheduled months in advance. Don't get left out in the cold.

Also Wednesdays are great days to have your family or office to the Island. Here's what a typical office training/social day might go like.

8:00 am:	Catch Hat Express to the Island (cater coffee and pastries)
9:00 – Noon:	Training Session/Office Meeting at The Commons (yacht club members could rent the club house)
Noon – 1:00 pm	Lunch
1:00 pm	Shuttle to golf course
2:00 – 4:00 pm	9 holes of golf
4:00 pm	Shuttle to The Commons for golf awards and drinks
4:45 – 5:00 pm	Load Hat Express
5:00 pm	Depart Island
5:45 pm	Arrive back in Everett

STAY INFORMED WITH TWITTER/FACEBOOK? Imagine its Friday afternoon at about 3:00 O'clock and the crew of *Hat Express* has just arrived on the vessel to begin preparing her for her evening run. During the pre-operations checks the crew notices something serious enough to render the vessel inoperable. At the same time you and your family are loading the car in West Seattle preparing to drive up and catch the ferry to the Island for the weekend. Even if we send an e-mail out or post something on the web site you won't get it and you'll still drive to Everett only to be disappointed.

TWITTER: If you had a free Twitter account and a text message capable cell phone you would get a text message on your phone that would stop you from making the drive. In 140 characters or less we could notify you of power outages on the Island, a canceled community run on

(Continued on page 5)

(Continued from page 4)

Elsie M II or a ‘boil water advisory’.

So we have set up a Twitter account to be used in only these emergency type situations to get the word out to all our owners at once. Our screen name is “HatIslandInfo” and it’s linked to our “hioffice@hatisland.com” e-mail address. For those of you not currently Tweeting here’s a short tutorial.

1. Go to Twitter.com
2. Create an account
3. Enable text messaging on your cell phone
4. Search for either HatIslandInfo in “search by names” or hioffice@hatisland.com in “search by e-mails”
5. Select to “Follow” HatIslandInfo

Text Messages from us will appear from number 40404. If at any time you decide that you don’t want to hear from us anymore, you simply go to your Twitter account and stop following us and you will stop receiving Tweets from us. As of November 22, we have 43 people signed up on this system.

FACEBOOK: Facebook is another free system through which you can receive updates from us either to your PC or SMS Message enabled cell phone. Again we don’t want to insult, but if you’re not technically savvy simply go to your local library and they can help you get set up, but it’s not that difficult, simply:

Go to www.Facebook.com

Sign up for an account

Find and “Like” Hat Island Info

Set up SMS Messaging to receive status updates from Facebook on your cell phone

Did You Know...

Why plant trees? Why leave trees on your property? Trees have many benefits to our community. They provide home to wildlife, including eagles and all types of birds. They provide shade and beauty. Here are some reasons you should cut as few trees as possible. Trees:

- Conserve energy by shading buildings
- Filter airborne pollutants
- Remove atmospheric carbon dioxide
- Reduce storm water runoff and erosion. This allows more recharging of the ground water supply. Wooded areas help prevent the transport of sediment and chemicals into the waters.
- Increase the value of our homes

Trees also help with interior water and springs on Hat Island which tend to seep. The springs along the bluff areas contribute to erosion and sloughing of the bluffs. Trees are critical for absorption in ALL divisions on our island. Conifers (or evergreens) continue to absorb up to 250 gallons of water a DAY in the winter months. Trees everywhere help reduce erosion on the bluffs. The de-stabilizing effect of cutting down trees may not be seen until 3-9 years after the trees have been cut down, as the roots of dead trees decay.

For more information see:

<http://www.ecy.wa.gov/programs/sea/pubs/93-31/chap3.html>

Don’t Forget The Lighted Boat Parade 2010, Our first participation in the Everett Yacht Club’s Lighted Boat Parade last year was a huge hit and we will do it again this year. This year it will be even bigger and better as the Everett Yacht Club is partnering with the Port of Everett to make it a full “Holiday on The Bay” celebration with a Holiday Market, School and County Choirs, Santa and the Boat Parade.

So mark your calendars for the evening of December 11th. Tickets are now on sale via our on-line store or you can get them through the office. Cost is \$20 per person and tickets are limited to 46. See the flyer in this issue.



(Continued on page 6)

(Continued from page 5)

BEHIND IN YOUR HOLIDAY SHOPPING?

Christmas will be here before you know. Here are some things to consider.

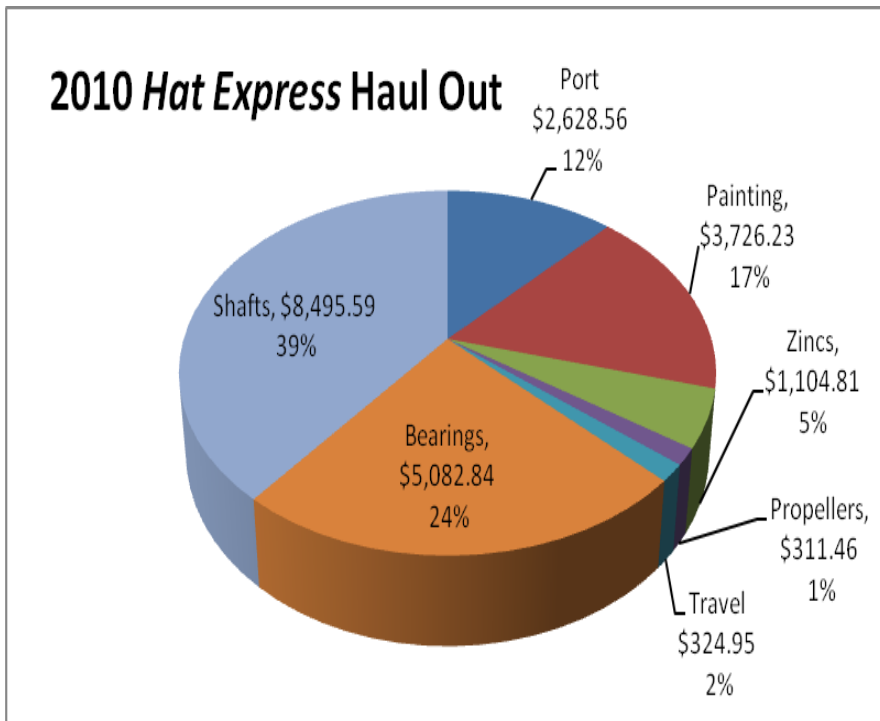
➡ Spend the Christmas weekend on Hat Island. The marina apartment offers the perfect place for holiday guests or to spend a quiet 4 night stretch on the Island. Hat Island in winter is unique, regardless of the weather.

➡ What to get that hard to buy for friend or family member? Give the gift of Hat Island. Tickets for the ferry or golf are perfect stocking stuffers. You can even buy them on line and we'll mail them to you. Go to www.hatisland.org and follow the "Shop On Line" link where you can buy ferry ticket books and golf ticket books with your credit card. Or call the office and we'll get them to you. Then your family and guests will have no excuse not to visit you next year.

Hat Express Haul Out Recap: *Hat Express had her annual maintenance haul out during the*

period 6 – 25 October. Craftsman United of Port Townsend performed the work. We chose Port Townsend because of the availability of skills and capabilities of marine craftsmen and the quality of their bid. Their final invoice was well within their bid ranges given the unknown wear on the propeller shafts.

When we allocate yard and travel costs to the two main projects we ended up spending \$5,800 on her annual bottom painting, zincs and propeller service. This is annual maintenance and is paid from the cash budget. The removal, repairs and replacements of her propeller shafts, bearings and stuffing boxes came in at \$15,400 and was paid out of the capital account. It turns out that it was fortuitous that we planned this work as it was in serious need of being done and delaying it could have had catastrophic results. We do not anticipate revisiting the shafts and bearings for another 5 years.



STEAMED VEGETABLES GARDEN MATERIALS:



Our stocks of garden materials are dwindling. We still have two styles of compost and cedar mulch. These are most beneficial as fall additives. When you put your garden to bed for the winter a turn in a generous helping of compost and next summer you'll be up to our hips in flowers or veggies. You should also consider a fall layer of mulch for your flower beds (not your vegetable gardens). It will help keep weeds down while you're away and helps plants survive a hard freeze. Purchases are "cash and carry" on your vehicle unless you want a whole pallet which we will deliver to your property.

(Continued on page 7)

(Continued from page 6)

You should also be thinking of what you might like us to stock for next spring. If you don't tell us we certainly won't have it.

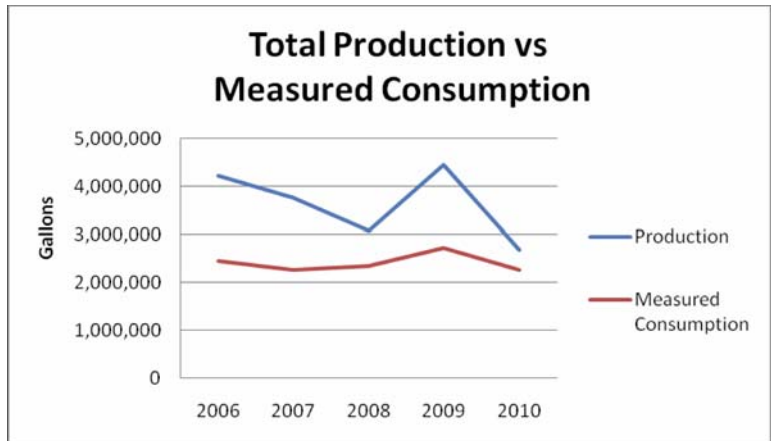
<u>What</u>	<u>\$/Bag</u>	<u>Inventory on 10/19/10</u>
Cedar Grove Compost, 1 cu ft bags	\$3.55	3 pallets of 40, plus 10 loose bags
Cedar Grove Booster Blend, 1 cu ft bags	\$3.70	1 pallet of 40, plus 20 loose bags
Bark Mulch Small, Cedar, 2 cu ft bags	\$4.10	2 pallets of 80, plus 65 loose bags
<i>Pea Gravel, 0.5 cu ft bags</i>	<i>\$4.85</i>	Sold Out
<i>Cedar Grove Potting Soil, 1 cu ft bags</i>	<i>\$4.05</i>	Sold Out
<i>Cedar Grove Top Soil, 1 cu ft bags</i>	<i>\$3.60</i>	Sold Out
<i>Bark Mulch Medium, Cedar, 2 cu ft bags</i>	<i>\$3.10</i>	Sold Out

WATER REPORT

We haven't done a water report since July as not much has changed over those months. We're still investigating the ongoing issues with the RO's beach wells and we're zeroing in on three interrelated issues. We'll do a full report on that in the spring when all our data is in from a winter long maintenance and testing program.

Here's some interesting data. At right is a chart showing production and consumption levels over the past 5 years.

First notice the red "Measured Consumption" line in the bottom chart. You can see that our consumption (the sum of all our meter readings over a year) is generally trending up with the exception of this current year. If we have an average 4th quarter we will actually consume less water than we did 5 years ago in 2006. This is due to the extremely wet spring and early summer that kept you off the island and not needing to water lawns and gardens.



Now compare the consumption line to the production line on the same chart. The production peak in 2009 was caused by a leak in the distribution line under the floor in the Division M pressure boost building. It was very hard to find. Taking the estimated loss from that leak out of the equation brings the data to the dashed blue line.

Next notice how the red and blue lines are trending towards each other. In other words we need to produce less water to meet the rising demand.

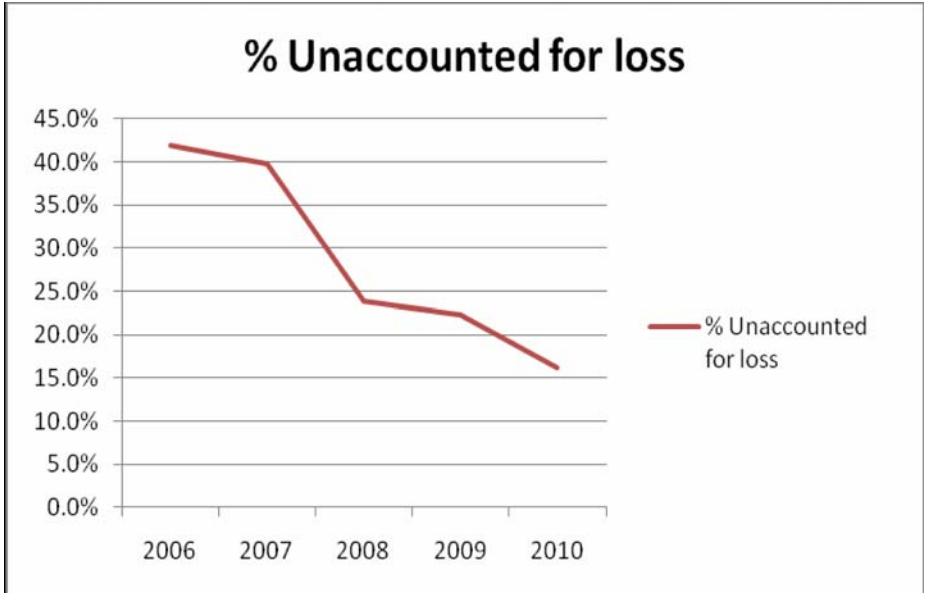
This trend is more clearly seen in the % Unaccounted for loss chart. As we continue to find the last few remaining leaks in the system each year our loss rate continues to decline. The dashed line represents the estimated loss caused by the Division M system leak.

So even though there are generally more people, using the island more frequently each year, we need to produce less water to meet that increasing demand. One nice benefit from that reduced production level is a corresponding reduction in the number and length of the pumping cycles required of our fresh water wells to meet that demand. We run our 5 fresh water wells in three day cycles. We run wells 1 and 5 together on one day. Next we run wells 3 and 6 together. Finally we run well 2 by itself. These production cycles are selected

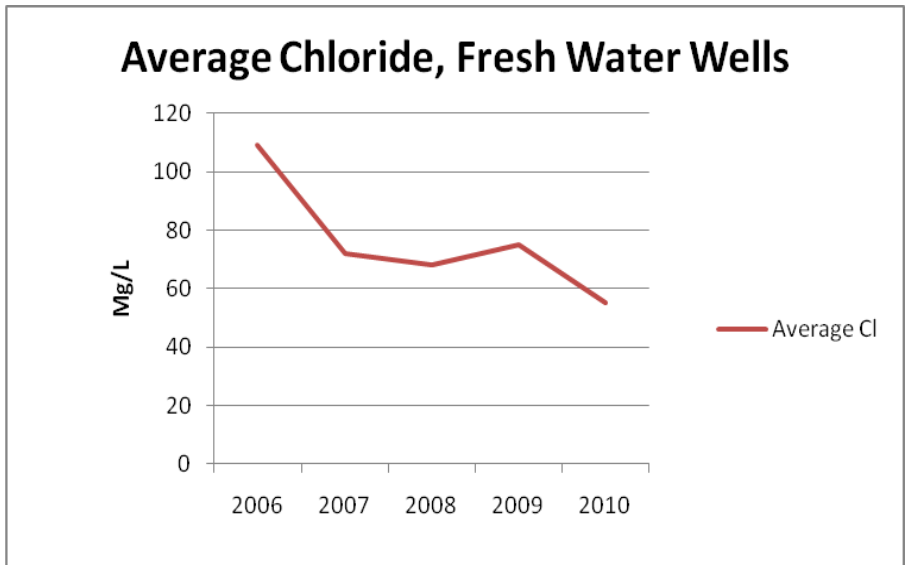
(Continued on page 8)

(Continued from page 7)

to produce similar daily production rates which make the process of maintaining chlorine rates constant a bit easier and to rest the wells before pumping them again. We measure Chloride (salt) levels in the well product twice daily. It's pretty clear that the less we run the wells the lower the Chloride levels are. Over the past five years we have lowered the Chloride levels from our fresh water wells from 109 to 55 Mg/L, a 50% reduction. Again you can see the spike caused by the leak in Div M in 2009. Of course the issues we are having with the RO wells production more than cancels that out during the 4 months that we generally run the RO.



Water Quality: We test our water monthly for biological contaminants, quarterly we test for Arsenic. Annually we have a rotating requirement of additional tests and once every three or four years we have a requirement to test pretty much everything. This was that year. In July we submitted samples from the reverse osmosis plant to test for VOCs and in October we sent samples from our fresh water wells to the state lab for; VOC – Volatile Organic Compounds, IOC – Inorganic Compounds, SOC – Synthetic Organic Compounds, and for Herbicides. All these tests came back within the EPA and State regulated



limits. There are 10 pages of tests results, too much to put here, but as always we have posted these results under the water tab of our web site. To help you wade through each of these reports we have named them with date, type of test and source. Those file names ending in RO came from the Reverse Osmosis Plant before entering the distribution system. Those file names ending in FWW came from the storage tank in Division G and represent an amalgamation of the post filtration product of our 6 fresh water wells

[Minutes of Hat Island Board Meeting November 20, 2010](#)

Meeting was held at the Hat Island Yacht Club. The meeting was called to order at 10:30 AM by President, Alan Dashen. In addition, Bill Townsend, Vice President, Susan Dahl, Treasurer and board member Bob Gowing were present. Becki Snellenberg, Secretary, board member Mike Murphy and board member Ginger

(Continued on page 9)

(Continued from page 8)

Harmon were present electronically. Chuck Motson, Island Manager was also present.

Minutes: The Board approved the Minutes of the Annual Homeowners meeting of October, 2010 as printed in the View Point.

Community Input: Vanny Heng had a complaint regarding an excessive water bill. Similar issues have been brought to the board in the past. It was determined that the meter was not malfunctioning and that the readings were correct. HIC cannot determine what occurs on an owner's property that could cause a loss of water and can only confirm the correct functioning of the meter and correct readings. When the factors that can be controlled by HIC are confirmed as working, the owner is responsible for the water usage.

Treasurers Report: Susan Dahl reviewed the Treasurer's report. Details of the report will be published in the View Point.

Committee Reports:

FINANCE – The budget is under review by the board. The Finance committee has proposed a lean budget based on historical use and which is reflective of current economic conditions. The board will vote to submit this budget for community vote at the December meeting.

VESSELS – No Report

MAINTENANCE/EQUIPMENT- Mike Murphy reported that a new drive train was installed in Wayne's water truck.

MARINA – No Report

WATER – Chuck Motson reported that recent testing show everything with the exception of the arsenic levels is meeting required standards. The arsenic levels continue to be fractionally off of new state standards and continue to be worked on. This poses no dangers to the water supply.

GOLF: Bob Gowing thanked everyone who worked on tree trimming and clean up on #8. Together he, Bill Townsend, Larry Bender, Mike Blacklock and Kevin Meyers put in over 100 man hours on this project.

SAFETY: No report

WATER ACCESS LOTS: No Report

OLD BUSINESS:

License Drivers Motion – A number of homeowners responded to the request for feedback on this issue. There are clearly strong feelings on this issue. On a motion by Bob Gowing, seconded by Susan Dahl, the board deferred voting on this issue. As part of an unrelated discussion, the Association attorneys have volunteered to conduct a board training session regarding HOA governance and it was determined that might present an opportunity to discuss this issue with them prior to making any final decisions.

NEW BUSINESS:

Fire Department Elsie M trips – Mike Worthy, Fire Chief of the Hat Island Volunteer Fire Department made

(Continued on page 10)

(Continued from page 9)

a request that the Fire Department not be charged for trips on the Elsie. On a motion by Ginger Harmon, seconded by Bob Gowing, the board approved a policy that the HIC will not charge the Fire Department for Elsie trips assuming that all reasonable efforts have been made to use space available on dead head runs to transport equipment or other needed supplies.

COMMUNITY INPUT:

Don Picini discussed opposition to licensing requirements for vehicles other than trucks or cars. He suggested the WA state standards of 13 years old for unsupervised use and supervised use for under 13 as a reasonable standard for all off road vehicles.

The meeting was adjourned at 11:50am and the board went into executive session.

Becki Snellenberg, Secretary.

HAT ISLAND COMMUNITY TREASURER'S REPORT September 2010

Annual Assessment Monies rec'd	\$	39,720
Other Sources (water, golf, marina etc)	\$	42,562
Operational expenses paid	\$	68,009
Balance of Operational funds ***	\$	116,004
Cash & Capital Reserve monies rec'd	\$	5,958
Marina Imp & Expansion monies rec'd	\$	19,397
RO Monies rec'd	\$	63
Marina Imp & Expansion expenses paid	\$	8,389
RO water expenses paid	\$	-
Capital and/or Cash reserve expenditures paid	\$	-
Balance in RO funds MM's	\$	84,128
Balance Elsie maintenance reserve	\$	14,550
Balance in Reserve for 2011 insurance pymt	\$	12,000
Balance in Capital Reserves Fund MM's	\$	86,171
Balance in Cash Reserve Fund MM's	\$	131,824
Balance in Marina MM's	\$	782,260
Year-to-Date Cash Flow		
Operational monies received	\$	722,688
Less amount transferred to cash & capital reserves	\$	55,425
Less cash paid to suppliers, employees & taxing authorities	\$	646,562
Less cash used to purchase property and equipment	\$	25,927
Net change in cash flow	\$	(5,226)

Note: Operations funds includes a \$25K infusion of cash reserve.

**HAT ISLAND COMMUNITY TREASURER'S REPORT
October 2010**

Annual Assessment Monies rec'd	\$ 8,720
Other Sources (water, golf, marina etc)	\$ 43,192
Operational expenses paid	\$ 80,748
Balance of Operational funds ***	\$ 82,792
Cash & Capital Reserve monies rec'd	\$ 1,308
Marina Imp & Expansion monies rec'd	\$ 21,473
RO Monies rec'd	\$ 22
Marina Imp & Expansion expenses paid	\$ 41,173
RO water expenses paid	\$ -
Capital and/or Cash reserve expenditures paid	\$ 5,635
Balance in RO funds MM's	\$ 84,188
Balance Elsie maintenance reserve	\$ 15,300
Balance in Reserve for 2011 insurance pymt	\$ 14,000
Balance in Capital Reserves Fund MM's	\$ 81,139
Balance in Cash Reserve Fund MM's	\$ 133,204
Balance in Marina MM's	\$ 763,141
Year-to-Date Cash Flow	
Operational monies received	\$ 774,601
Less amount transferred to cash & capital reserves	\$ 58,733
Less cash paid to suppliers, employees & taxing authorities	\$ 721,681
Less cash used to purchase property and equipment	\$ 31,554
Net change in cash flow	\$ (37,368)

Note: Operations funds includes a \$25K infusion of cash reserve.

HOME & PROPERTY MAINTENANCE!

Yard clean-up, lawn mowing, portable welding, painting,
pressure washing, car & small engine repair, custom metal handrails. Oil changes, golf
cart repair, labor, helper.

Satisfaction Guaranteed!

Larry or Marcia (M-100) 360-444-6613



Join us on *Hat Express* for:
The Everett Yacht Club's

Lighted Boat Parade

Saturday, December 11th, 2010

Join us onboard *Hat Express* for the best seat in town for the Everett Yacht Club's annual Lighted Boat Parade. BYOB and bring your favorite hors d'oeuvres or desert to share

Coffee and soft drinks complementary, plates, glasses, and flatware provided



4:00 Depart Hat Island
5:00 Depart Everett
5:30 – 6:30 Parade

7:00 Depart Everett for Return to Hat Island
7:45 Ferry returns to Everett

Limit 46 passengers
\$20 per person
Rain or Shine

Advance Sale Tickets Only

Tickets go on sale 1 November

Tickets available only on line and through the Island office



Bud Lofgren

Expert in Hat Island Real Estate
Selling Hat Island since 1977
Ready to Help You Buy or Sell Your Property
Bud Lofgren - 425-643-7667
www.budsellshatland.com
(visit our updated web site)
Keller Williams-Westsound

ADVERTISING in the "VIEW POINT"
Business Card size \$100.00 per year
Classified Ad (Want, sell, etc.)
10 words or less \$5.00 for 1 time

Hat Island Real Estate, Inc.



Jon & Karen Rypdahl Owners/Brokers

Toll Free 877-949-9468
Jon cell 206-949-9468
Karen cell 206-999-1619
E-Fax 877-583-8060
E-Mail rypdahl@msn.com
Website www.rypdahl.com

"Specializing in
Hat Island"



Advertisement

STEELER INC

Matt Surowiecki

Steeler is a GREEN Company that promotes the well-being of the environment by:
~Saving thousands of trees every month by producing 2 X 4' and many other sized steel studs

~ Planting approximately 3,500 trees and shrubs on Hat Island in the last couple years
The most preferred tree used for wood framing is a 50-75 year old Douglas Fir and for the last 32 years, Steeler Inc has saved 500,000 Douglas fir trees by manufacturing steel framing materials that replaced the wood for wood framing materials.

If you have any questions contact
Sharon@ Steeler 206 725 2500 or
Matt Surowiecki @ Steeler 206 725 2500
Cell 206 650 8400
Check out Matt's nursery on Hat Island



RENEWAL GARDENS

Kristine Distel-Bennett
Hat Island

Phone 360-444-6632 Cell 206-915-8459

Co-Creating Your Ideal Surroundings With Nature
Professional Landscape/Garden Design
Maintenance

BayTown ESCROW INC.

We close Hat Island

30 years experience closing sales on Hat Island
Escrow officer: Ed Medema
5017 Claremont Way, Everett, WA 98203
Phone: (425)252-5773 Fax: (425)259-0898
www.baytownescrow.com
email: baytownescrow@verison.net



Charlotte Maulsby

Broker / Associate, GRI, CRS, ARB

Hall of Fame
206.999.4962
(f)360.563.0842

charlotte@charlottesells.com
www.charlottesells.com



RE/MAX
Eastside Brokers, Inc.



Parts & Service

Yamaha
Honda
North River
Arima
Duroboat

1230 W. Marine View Drive
Everett, WA 98201

425-259-6053 • Fax: 425-259-6052 • WATTS: 800-441-6053



Parts & Service

Boat Brokerage

Dry Stack Storage Moorage

Haul & Launch

Work Yard

Johnson & Evinrude

MerCruiser, Volvo, OMC

"On the Waterfront" • 1001 14th ST. • EVERETT, WA 98201 • (425) 252-3088

Take Note



PRST STD
U S POSTAGE
PAID
PERMIT NO. 281
EVERETT WA

SCHEDULE OF EVENTS

December

4 Sat Elsie M load/run 7:30am
11 Sat Fire Drill 10:00am
Fire Bunnies lunch 12:30 pm
Fire Cmmissioners meet 1:30pm

11 Sat **Everett Lighted boat parade
cruise**

18 Sat HIC monthly meeting 10:30am
27 Mon View Point articles due

January

8 Sat Elsie M load/run 7:30am
8 Sat Fire Drill 10:00am
Fire Bunnies lunch 12:30 pm
Fire Cmmissioners meet 1:30pm
15 Sat HIC monthly meeting 10:30am
24 Mon ViewPoint articles due

Official Publication of the Hat Island community
3616 Colby Ave PMB 335, Everett WA 98201

HAT ISLAND COMMUNITY

Board of Trustees
3616 Colby Ave PMB 335
Everett WA 98201
(360) 444-6611 Fax (360)444-6614
Web site: www.hatisland.org
e-mail: hioffice@hatisland.com

Pres: Alan Dashen hm (425)455-9691
e-mail: alandashen@msn.com
Vice.Pres.Bill Townsend Hm(360)444-6634
Cell 425-985-8894
e-mail: starkerservices@whidbey.com
Treas: Susan Dahl hm(360)805-2505
cell 206-234-2645
email: snjdahl@hotmail.com
Sec:: Becki Snellenberg hm (206)232-2699
cell: (206)498-7881 Hat hm(360)444-6719
email: beckisn@hotmail.com
Ttee: Mike Murphy hm:(425)864-1228
e-mail: murphyloti5@live.com
Ttee:Bob Gowling hm (425)820-3386
hat(360)444-6701
e-mail robgowling@aol.com
Ttee: Ginger Harmon Hm Hat(360)444-6815
Hm AZ: 480-288-8810 cell: (425)387-1301
e-mail:: gharmon35@aol.com

Island Manager

Chuck Motson Office(360)444-6611
e-mail: hioffice@hatisland.com

"View Point" Editor

Eleanor Bruegeman Hm(206)523-6002
e-mail : elbeeb@aol.com

Harbormaster

Barb Conwell 360-444-6656

Take your garbage home

**Hat Express
Schedule**



September 27, 2010 through December 31, 2010

	Day	Everett	Hat Island	Hat Island	Everett	Remarks
Off Season	Wed	8:00am	8:45am	9:00am	9:45am	
	Wed	4:00pm	4:45pm	5:00pm	5:45pm	
	Fri	6:00pm	6:45pm	7:00pm	7:45pm	
	Sat	9:00am	9:45am	4:00pm	4:45pm	
	Sun	3:00pm	3:45pm	4:00pm	4:45pm	